



AEGIS

SORTATION



2022 BELTED CONVEYOR CATALOG

MODEL "LPB"

Medium Duty Slider Bed Conveyor



- Packing
- Inspecting
- Sorting
- Assembly
- Testing
- Transporting

STANDARD SPECIFICATIONS

Belt - 8", 12", 18", 20", 24" and 30" Black PVC 120 belt.

Bed - 12 gauge powder painted formed steel, 4" deep. Bed sections are 5 feet and 10 feet long bolted together with splice plates and floor supports.

Tail Pulley - 4" diameter crowned with $1\frac{3}{16}$ " diameter shaft.

Drive Pulley - 4" diameter and 8" diameter crowned and fully lagged. 4" diameter pulley with $1\frac{3}{16}$ " diameter shaft, 8" diameter pulley with $1\frac{7}{16}$ " diameter shaft.

Snub-Roller - 2" diameter for 4" diameter pulley, 2 $\frac{1}{2}$ " diameter for 8" diameter pulley.

Return Roller - 1.9" diameter adjustable on 10'0" centers.

Floor Supports - Adjustable 28 $\frac{1}{4}$ " to 42 $\frac{1}{4}$ " from floor to top of belt. One support supplied at each end of conveyor and at each bed joint.

Take-Up - 6" long screws located at tail pulley to tighten belt.

Bearings - Sealed-prelubricated with cast iron housings.

Speed Reducer - C-Face mounted heavy duty worm gear reducer.

Motor - $\frac{1}{2}$ HP 230/460-3-60 TE motor.

Belt Speed - 60 FPM constant.

Capacity - Maximum load per lineal foot of conveyor - 75 lbs. Not to exceed Load Capacity Chart.

OPTIONAL EQUIPMENT

Belt - Nitrile (white or black) with smooth top cover, Black PVC rough top, Brown Nitrile rough top. Special belts on application.

Side Tables - 10", 16" or 22" wide formed steel side tables provide 12", 18" or 24" work area. Tables are supported by angles bolted to bed section.

Guard Rails - Adjustable channel, continuous channel, or solid steel guard rails available.

Floor Supports - Lower or higher than standard. Castered supports with 4" diameter or 6" diameter rigid or swivel casters.

Ceiling Hangers - $\frac{1}{2}$ " diameter threaded rods 8 feet long with locking nuts and mounting hardware. Other lengths are available.

Gravity Conveyor Brackets - Adjustable bracket with $1\frac{3}{8}$ " diameter pop-out roller for attaching wheel or roller conveyor.

Nose-Over - Adjustable single or double nose-over provides smooth transfer from incline to horizontal. See drawing on page 96 for details.

Center Drive - Mounted below conveyor bed section. Can be placed most anywhere in conveyor length.

Side Mounted Drive - End drive mounted to side of conveyor section. Specify side. Minimum 6" elevation with 4" drive pulley, minimum 9" elevation with 8" drive pulley.

Overhead Drive - End drive mounted above conveyor. Specify clearance required.

Auxiliary Take-Up - Mounted below conveyor bed section. Can be placed most anywhere in conveyor length.

Motor - Single phase, energy efficient, explosion proof, etc. Other HP available.

Belt Speed - Constant and variable belt speeds available.

Electrical Controls - Magnetic starters and push button stations; manual motor starters with overload protection, others.

MODEL "LPB"

Bed Length	Overall Length	Diameter Drive Pulley	Belt Width	8"	12"	18"	20"	24"	30"
			Bed Width	12"	16"	22"	24"	28"	34"
			Bed	12 Gauge Formed Steel Bed					
5'	5'10"	4"	Weight (lbs.)	252	272	315	343	366	389
10'	10'10"	4"		286	314	382	397	422	447
15'	15'10"	4"		343	380	475	494	528	562
20'	20'10"	4"		377	422	542	565	607	649
25'	25'10"	4"		434	488	635	662	713	764
30'	30'10"	4"		468	530	702	733	792	851
35'	35'10"	4"		525	596	795	830	898	966
40'	40'10"	4"		559	638	862	901	977	1053
45'	45'10"	4"	Weight (lbs.)	616	704	955	998	1083	1168
50'	50'10"	4"		655	753	1032	1081	1176	1271
55'	56' 2"	8"		712	819	1125	1178	1282	1386
60'	61' 2"	8"		746	861	1192	1249	1351	1453
65'	66' 2"	8"		803	927	1285	1346	1457	1568
70'	71' 2"	8"		839	971	1364	1420	1549	1678
75'	76' 2"	8"		896	1037	1457	1517	1655	1793
80'	81' 2"	8"		930	1079	1514	1588	1734	1880
85'	86' 2"	8"	Weight (lbs.)	987	1145	1607	1685	1840	1995
90'	91' 2"	8"		1021	1187	1673	1756	1920	2084
95'	96' 2"	8"		1078	1253	1766	1853	2026	2199
100'	101' 2"	8"		1112	1295	1833	1924	2105	2286

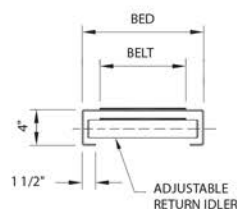
Load Capacity Chart

60 FPM	
HP	TOTAL LOAD
1/2	435 lbs.
3/4	650 lbs.
1	810 lbs.
NOTE: 1 HP Max. for this model	

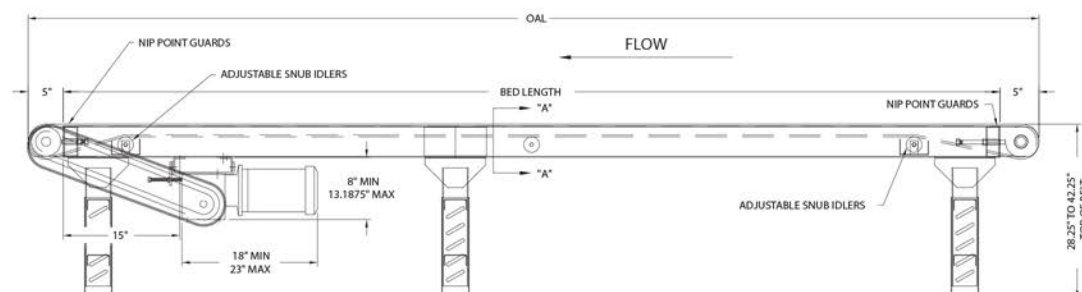
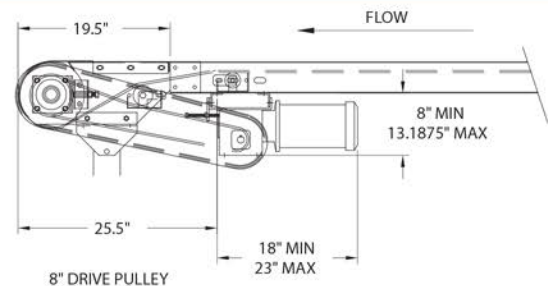
*For minimum OAL, contact factory.



8" DIAMETER END DRIVE



VIEW A-A



MODEL "HPB"

Heavy Duty Slider Bed Conveyor



- Packing
- Inspecting
- Sorting
- Transporting
- Assembling
- Testing

STANDARD SPECIFICATIONS

Belt - 12", 14", 18", 24", 30" and 36" Black PVC 120 belt.

Bed - 12 gauge powder painted formed steel, 6½" deep. Bed sections are 5 feet and 10 feet long bolted together with splice plates and floor supports.

Tail Pulley - 4" diameter for belt widths through 30" wide. 6" diameter for 36" and wider belts. 4" diameter pulley has 1⅜" diameter shaft, 6" diameter pulley has 1⅞" diameter shaft.

Drive Pulley - 8" diameter crowned and fully lagged with 1⅞" diameter shaft.

Snub Roller - 2½" diameter directly behind drive pulley; 2" diameter at tail pulley.

Return Roller - 1.9" diameter adjustable, on 10'0" centers.

Floor Supports - Adjustable 30¾" to 44¾" from floor to top of belt. One support supplied at each end of conveyor and at each bed joint.

Take-Up - 6" long screws located at tail pulley to tighten belt.

Bearings - Sealed-prelubricated with cast iron housings.

Speed Reducer - C-Face mounted heavy duty worm gear reducer.

Motor - ½ HP 230/460-3-60 TE motor.

Belt Speed - 60 FPM constant.

Capacity - Maximum load per lineal foot of conveyor - 100 lbs. Not to exceed Load Capacity Chart.

OPTIONAL EQUIPMENT

Belt - Nitrile (white or black) with smooth top cover, Black PVC rough top, Brown Nitrile rough top. Special belts on application.

Guard Rails - Adjustable channel, continuous channel, or solid steel guard rails available.

Floor Supports - Lower or higher than standard. Castored supports with 4" diameter or 6" diameter rigid or swivel casters.

Ceiling Hangers - ½" diameter threaded rods 8 feet long with locking nuts and mounting hardware. Other lengths are available.

Gravity Conveyor Brackets - Adjustable bracket with 1⅜" diameter pop-out roller for attaching wheel or roller conveyor.

Nose-Over - Adjustable single or double nose-over provides smooth transfer from incline to horizontal. See drawing on page 96 for details.

Center Drive - Mounted below conveyor bed section. Can be placed most anywhere in conveyor length.

Side Mounted Drive - End drive mounted to side of conveyor section. Specify side. Minimum elevation - 9".

Overhead Drive - End drive mounted above conveyor. Specify clearance required.

Auxiliary Take-Up - Mounted below conveyor bed section. Can be placed most anywhere in conveyor length.

Motor - Single phase, energy efficient, explosion proof, etc. Other HP available.

Belt Speed - Constant and variable belt speeds available.

Electrical Controls - Magnetic starters and push button stations; manual motor starters with overload protection, others.

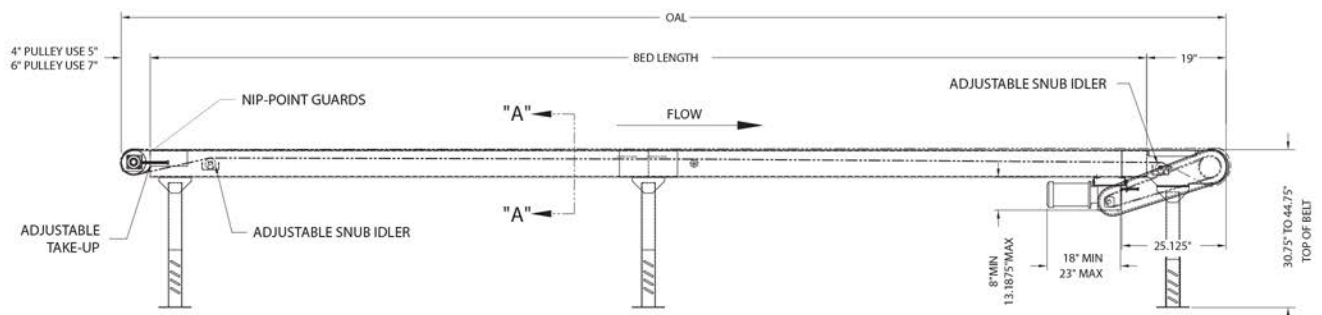
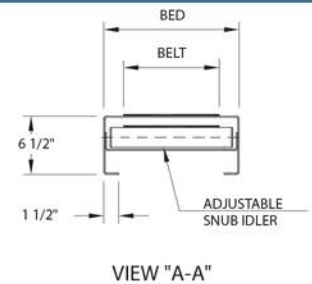
MODEL "HPB"

Bed Length	Overall Length	Belt Width Bed Width	12"	14"	18"	24"	30"	36"
			18"	20"	24"	30"	36"	42"
5'	7'	Weight (lbs.)	355	370	396	425	455	490
10'	12'		401	450	485	525	565	605
15'	17'		487	558	615	675	736	802
20'	22'		533	638	704	775	846	917
25'	27'		619	746	834	925	1017	1115
30'	32'		665	826	923	1025	1127	1230
35'	37'		751	934	1053	1175	1298	1427
40'	42'		797	1014	1142	1275	1408	1542
45'	47'		883	1122	1272	1425	1579	1740
50'	52'		929	1202	1361	1525	1689	1855
55'	57'		1015	1310	1491	1675	1860	2052
60'	62'		1061	1390	1580	1755	1970	2167
65'	67'		1147	1498	1710	1925	2141	2365
70'	72'		1193	1578	1799	2025	2251	2480
75'	77'		1279	1686	1929	2175	2422	2677
80'	82'		1325	1766	2018	2275	2532	2792
85'	87'		1411	1874	2148	2425	2703	2990
90'	92'		1457	1954	2237	2525	2813	3105
95'	97'		1543	2062	2367	2675	2984	3302
100'	102'		1589	2142	2456	2775	3094	3417
105'	107'		1675	2250	2586	2925	3265	3615
110'	112'		1721	2330	2675	3025	3375	3730
115'	117'		1807	2438	2805	3175	3546	3927
120'	122'		1853	2518	2894	3275	3656	4042
125'	127'		1939	2626	3024	3425	3777	4240
130'	132'		1985	2706	3113	3525	3937	4355

Load Capacity Chart

60 FPM	
HP	TOTAL LOAD
1/2	435 lbs.
3/4	650 lbs.
1	810 lbs.
1 1/2	1080 lbs.
2	1300 lbs.

*For minimum OAL, contact factory.



MODEL "TSB"

Trough Bed Belt Conveyor

- Conveys boxes, bags, cases, loose parts
- Built-in guard rails allow overhead conveying



STANDARD SPECIFICATIONS

Belt - 8", 12", 18", 20", 24" and 30" Black PVC 120 belt.

Bed - 12 gauge powder painted formed steel with 2 1/2" high vertical sides bolted to top of bed. Standard sections are 5 and 10 feet long bolted together with floor supports and splice plates.

Tail Pulley - 4" diameter crowned with 1 3/16" diameter shaft.

Drive Pulley - 4" diameter and 8" diameter crowned and fully lagged. 4" diameter pulley with 1 3/16" diameter shaft, 8" diameter pulley with 1 7/16" diameter shaft.

Snub-Roller - 2" diameter for 4" diameter pulley, 2 1/2" diameter for 8" diameter pulley.

Return Idler - 1.9" diameter adjustable, on 10'0" centers.

Floor Supports - Adjustable 28 1/4" to 42 1/4" from floor to top of belt. One support supplied at each end of conveyor and at each bed joint.

Take-Up - 6" long screws located at tail pulley to provide belt tension.

Bearings - Sealed-prelubricated with cast iron housings.

Speed Reducer - C-Face mounted heavy duty worm gear reducer.

Motor - 1/2 HP 230/460-3-60 TE motor.

Belt Speed - 60 FPM constant.

Capacity - Maximum load per lineal foot of conveyor - 75 pounds. Not to exceed Load Capacity Chart.

OPTIONAL EQUIPMENT

Belt - Nitrile (white or black), with smooth top cover, Black PVC rough top, Brown Nitrile rough top. Special belts on application.

Guard Rail - Higher than 2 1/2" vertical sides, 4", 6", 9", to 12" max.

Floor Supports - Lower or higher than standard. Castored supports with 4" diameter or 6" diameter rigid or swivel casters.

Ceiling Hangers - 1/2" diameter threaded rods 8 feet long with locking nuts and mounting hardware. Other lengths are available.

Gravity Conveyor Brackets - Adjustable bracket, with 1 3/8" diameter

pop-out roller, for attaching wheel or roller conveyor.

Nose-Over - Adjustable single or double nose-over provides smooth transfer from incline to horizontal. See drawing on page 96 for details.

Center Drive - Mounted below conveyor or bed section. Can be placed most anywhere in conveyor length.

Side Mounted Drive - End drive mounted to side of conveyor section. Specify side. Minimum 6" elevation with 4" drive pulley, minimum 9" elevation with 8" drive pulley.

Overhead Drive - End drive mounted above conveyor. Specify clearance required.

Auxiliary Take-Up - Mounted below conveyor bed section. Can be placed most anywhere in conveyor length.

Motor - Single phase, energy efficient, explosion proof, etc. Other HP available.

Belt Speed - Constant and variable belt speeds available.

Electrical Controls - Magnetic starters and push button stations; manual motor starters with overload protection, others.

Hugging Strip - Steel bars each side bolt to guard rail to prevent material from getting under belt. Must be used with a solid guard rail.

Troughing Attachment - Steel bars each side under belt form trough for handling loose material.

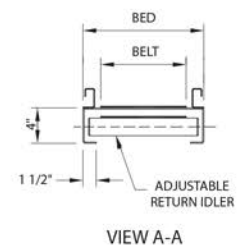
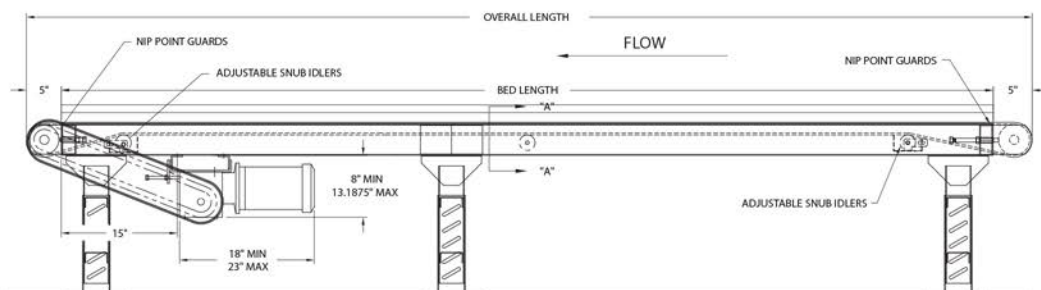
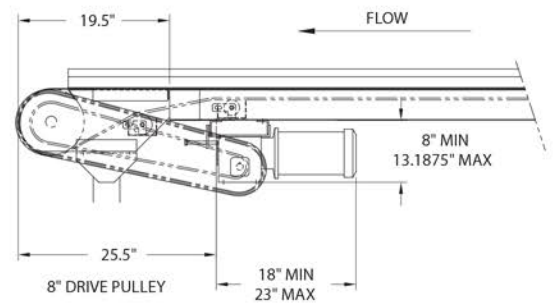
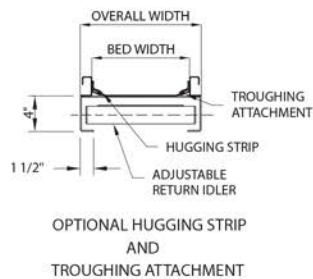
MODEL "TSB"

Bed Length	Overall Length	Diameter Drive Pulley	Belt Width	8"	12"	18"	20"	24"	30"
			Overall Width	12"	16"	22"	24"	28"	34"
			Bed Width	9"	13"	19"	21"	25"	31"
5'	5'10"	4"	Weight (lbs.)	270	290	335	360	380	410
10'	10'10"	4"		320	350	415	430	450	480
15'	15'10"	4"		390	425	520	535	570	605
20'	20'10"	4"		445	490	558	580	625	695
25'	25'10"	4"		520	570	650	680	735	820
30'	30'10"	4"		570	630	730	755	820	920
35'	35'10"	4"		621	700	810	850	920	1030
40'	40'10"	4"		695	780	890	935	1020	1140
45'	45'10"	4"	Weight (lbs.)	750	835	980	1020	1120	1250
50'	50'10"	4"		825	920	1070	1120	1220	1370
55'	56' 2"	8"		880	995	1160	1215	1320	1480
60'	61' 2"	8"		950	1070	1248	1303	1420	1590
65'	66' 2"	8"		1000	1130	1325	1390	1520	1705
70'	71' 2"	8"		1080	1220	1420	1490	1620	1825
75'	76' 2"	8"		1130	1280	1504	1575	1720	1935
80'	81' 2"	8"		1205	1360	1590	1665	1818	2048
85'	86' 2"	8"		1255	1420	1670	1752	1920	2155
90'	91' 2"	8"		1330	1500	1755	1840	2035	2325
95'	96' 2"	8"		1380	1560	1835	1925	2135	2433
100'	101' 2"	8"		1460	1640	1920	2015	2204	2485

Load Capacity Chart

60 FPM	
HP	TOTAL LOAD
1/2	435 lbs.
3/4	650 lbs.
1	810 lbs.

NOTE: 1 HP Max. for this model





- **Adjustable floor supports**
- **Incline to 15°**
- **Guard rails**
- **Economical**

STANDARD SPECIFICATIONS

Bed - 5½" deep x 14 gauge powder painted formed steel channel frame. Bed sections are 10 feet and 5 feet long, bolted together with splice plates and floor supports.

Belt - 12", 18", 24", 30", 36", 42" and 48" wide, black PVC 120, FS top side, brushed bottom side, with clipper lacing.

Guard Rail - 6" high x 16 gauge formed, powder painted steel on both sides, full length of bed sections.

Underside Guards - Formed 16 gauge pans full length of bed sections, removable, secured with TEK screws.

Tail Pulley - 4" or 6" diameter (see chart) crowned. 4" diameter has 1⅜" diameter shaft, 6" diameter has 1⅞" diameter shaft.

Drive Pulley - 4", 6" and 8" diameter crowned and fully lagged. 4" diameter pulley has 1⅜" diameter shaft, 8" and 6" diameter pulleys have 1⅞" diameter shaft.

Snub-Roller - 2" diameter for 4" and 6" diameter pulleys, 2½" diameter for 8" diameter pulley.

Return Rollers - 1.9" diameter placed on 10' centers.

Floor Supports - Adjustable 30" to 44" from floor to top of belt. One floor support provided at each end of conveyor and at each bed joint.

Take-Up - 6" long screws located at tail pulley to provide belt tension.

Bearings - Sealed, prelubricated with cast iron housings.

Speed Reducer - C-Face mounted heavy duty worm gear reducer.

Motor - ½ HP 230/460-3-60 TE motor.

Belt Speed - 60 FPM.

Capacity - 10 pounds per foot maximum live load. See Load Capacity Chart.

OPTIONAL EQUIPMENT

Guard Rails - 12", 18", or 24" high; vertical or 30 degree flare, for one or both sides.

Floor Supports - Higher than standard supports available to 121".

Ceiling Hangers - ½" diameter threaded rods, 8 feet long with locking nuts and mounting hardware.

Nose-Over - Fixed single nose-over at 10, 12½ or 15 degrees. Adjustable nose-over roller for belt tracking.

Center Drive - Mounted below conveyor bed section. Can be placed most anywhere in conveyor length.

Auxiliary Belt Take-Up - Mounted below conveyor bed section. Can be placed most anywhere in conveyor length.

Side Mounted End Drive - Mounted to side of conveyor bed. Minimum elevations: 4" pulley - 7½", 6" pulley - 8½", 8" pulley - 10½". Specify side.

Four Pulley Hitch - For transferring material from horizontal to incline section.

Inline Transfer Unit - For transferring material from one horizontal conveyor to another.

Belt - #120 PVC rough top belt for incline applications.

Belt Speed - 45, 75, 90 and 120 FPM. Please specify.

Motor - Single phase, energy efficient, explosion proof, etc. Other HP available.

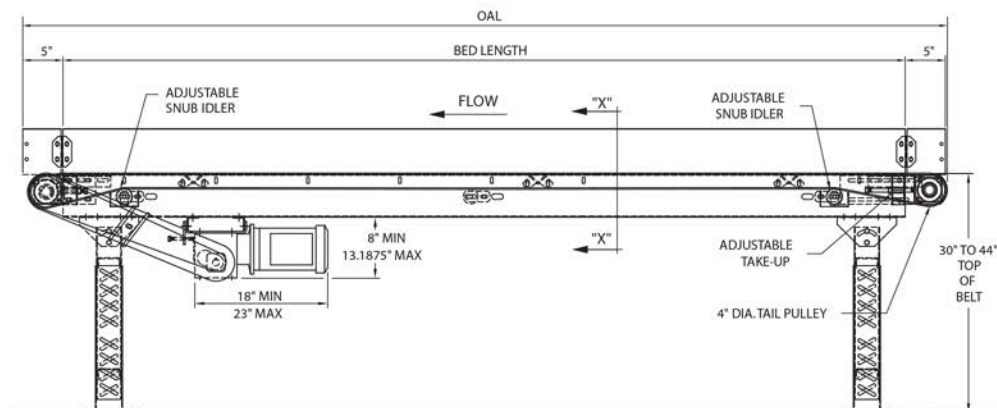
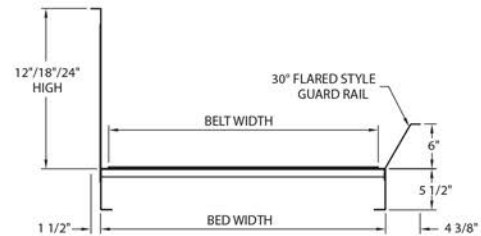
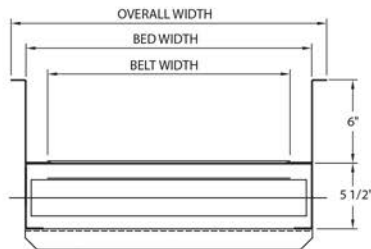
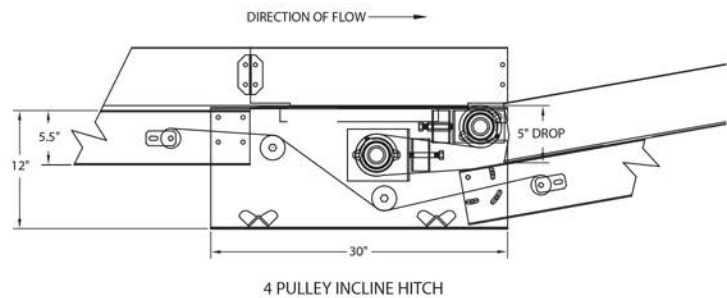
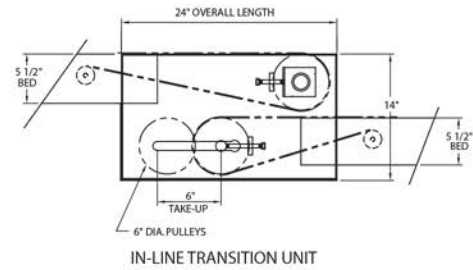
MODEL "SBT"

MODEL SBT - WEIGHTS

Belt Width	12"	18"	24"	30"	36"	42"	48"
Bed Width	14"	20"	26"	32"	38"	44"	50"
Drive Pulley Dia.	4"	4"	4"	6"	6"	8"	8"
Tail Pulley Dia.	4"	4"	4"	6"	6"	6"	6"
10'0" OAL	723	858	993	1125	1260	1510	1650
Per Foot	25	28	32	37	42	47	51

Load Capacity Chart

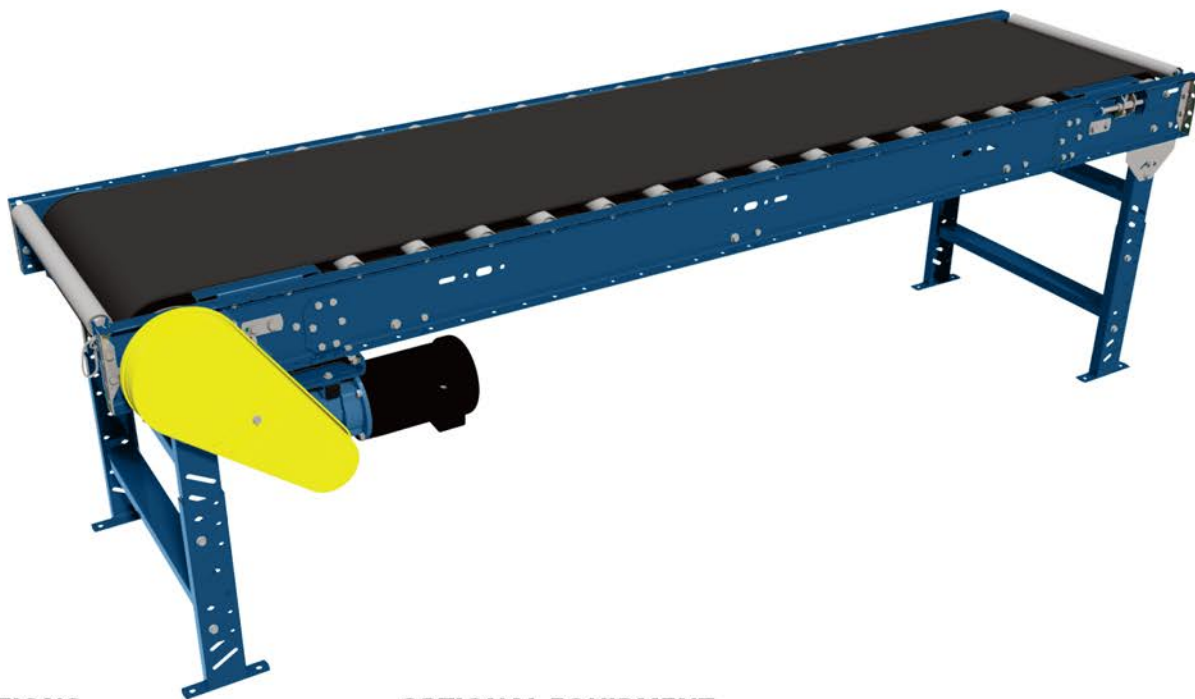
60 FPM	
HP	TOTAL LOAD
1/2	435 lbs.
3/4	650 lbs.
1	810 lbs.
1 1/2	1080 lbs.
2	1300 lbs.



MODEL "190RB"

Roller Bed Belt Conveyor

- Packing
- Inspecting
- Sorting
- Assembling
- Testing
- Transporting horizontally or on incline



STANDARD SPECIFICATIONS

Belt - 12", 18", 24", 30", 36", 42" and 48" Black PVC 120 belt.

Bed - Roller bed with 1.9" diameter galvanized steel rollers. Rollers spaced on 6" centers. Rollers mounted in 7" deep x 12 gauge powder painted formed steel channel frames. Frames bolted together with butt couplings and floor supports.

X-Bracing - Frame squaring device supplied on conveyors 40 feet and longer for every other bed section. X-bracing insures good product and belt tracking.

Drive Pulley - 8" diameter crowned and fully lagged, 1 $\frac{1}{16}$ " shaft.

Tail Pulley - 4" diameter crowned supplied through 30" wide belts. 6" diameter crowned supplied for 36" and wider belts. 4" diameter pulley has 1 $\frac{3}{16}$ " diameter shaft; 6" diameter pulley has 1 $\frac{1}{16}$ " diameter shaft.

Pop-Out Roller - 1.9" diameter roller, located at both ends of unit.

Snub Roller - 2 $\frac{1}{2}$ " diameter adjustable roller, located directly behind drive pulley, 2" diameter located behind tail pulley.

Return Rollers - 1.9" diameter adjustable on 10'0" centers.

Take-Up - Located at tail end, provides 12" of belt take-up.

Bearings - Sealed-prelubricated with cast iron housings.

Floor Supports - Adjustable 31 $\frac{5}{8}$ " to 45 $\frac{5}{8}$ " from floor to top of belt. One support supplied at each end of conveyor and at each bed joint.

Speed Reducer - C-Face mounted heavy duty worm gear reducer.

Motor - $\frac{1}{2}$ HP 230/460-3-60 TE motor.

Belt Speed - 60 FPM constant.

Capacity - 200 pounds per foot maximum. Not to exceed Load Capacity Chart.

OPTIONAL EQUIPMENT

Belt - Nitrile (white or black) with smooth top cover, Black PVC rough top, Brown Nitrile rough top. Special belts on application.

Roller Centers - 1.9" diameter galvanized steel rollers spaced on 3", 4 $\frac{1}{2}$ ", 9" or 12" centers.

Guard Rails - Adjustable channel, continuous channel, or solid steel guard rails available.

Floor Supports - Lower or higher than standard. Castored supports with 4" diameter or 6" diameter rigid or swivel casters.

Ceiling Hangers - $\frac{1}{2}$ " diameter threaded rods 8 feet long with locking nuts and mounting hardware. Other lengths are available.

Nose-Over - Adjustable single or double nose-over provides smooth transfer from incline to horizontal. See drawing on page 96 for details.

Side Mounted Drive - End drive mounted to side of conveyor section. Specify side. Minimum elevation - 10".

Center Drive - Mounted below conveyor bed section. Can be placed most anywhere in conveyor length.

Auxiliary Take-Up - Mounted below conveyor bed section. Can be placed most anywhere in conveyor length.

Motor - Single phase, energy efficient, explosion proof, etc. Other HP available.

Belt Speed - Constant and variable belt speeds available.

Electrical Controls - Magnetic starters and push button stations; manual motor starters with overload protection, others.

Power Feeder - Separate belt section with (2) MD-6 (28 $\frac{1}{2}$ " to 42 $\frac{1}{2}$ " adjustable) supports. Feeder driven by roller chain from main conveyor. Auxiliary take-up required on inclined conveyor. Integral feeder available.

MODEL "190RB"

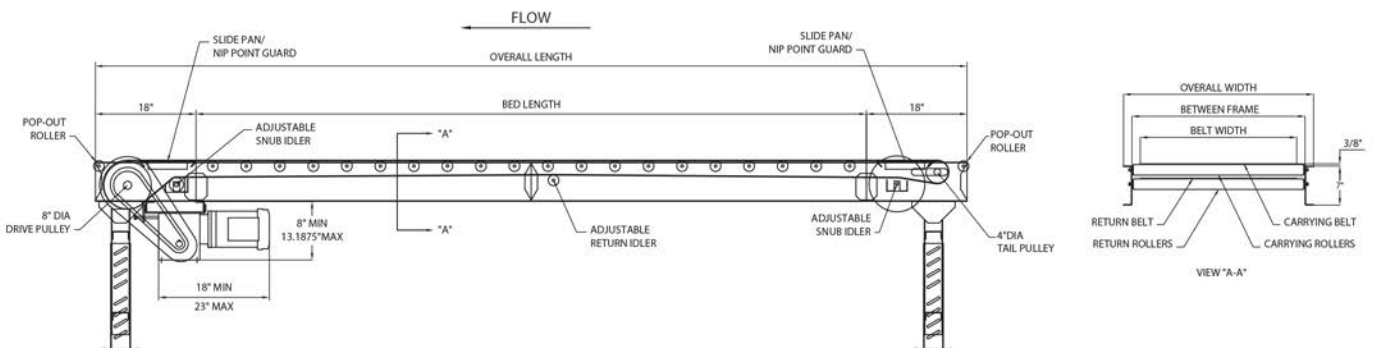


Bed Length	Overall Length	Belt Width	12"	18"	24"	30"	36"	42"	48"
		Between Frames	15"	21"	27"	33"	39"	45"	51"
		Overall Width	18"	24"	30"	36"	42"	48"	54"
		Rollers Spaced on 6" Centers							
5'	8'	Weight (lbs.)	290	330	370	410	450	500	540
10'	13'		370	440	500	560	620	670	740
15'	18'		460	540	610	690	770	870	960
20'	23'		550	660	750	850	950	1070	1190
25'	28'		650	780	890	1010	1140	1290	1420
30'	33'		750	900	1040	1180	1330	1500	1660
35'	38'		820	990	1150	1310	1490	1670	1880
40'	43'		940	1146	1320	1500	1700	1930	2140
45'	48'		1060	1280	1480	1680	1900	2160	2400
50'	53'		1150	1380	1610	1830	2070	2360	2620
55'	58'		1260	1520	1770	2020	2280	2690	2880
60'	63'		1350	1640	1900	2170	2460	2800	3110
65'	68'		1450	1770	2050	2350	2650	3020	3360
70'	73'		1550	1880	2200	2500	2830	3230	3590
75'	78'		1660	2003	2350	2680	3030	3450	3840
80'	83'		1750	2130	2480	2830	3210	3660	4070
85'	88'		1860	2270	2640	3010	3410	3892	4350
90'	93'		1950	2380	2770	3160	3590	4080	4550
95'	98'		2060	2510	2930	3340	3790	4320	4800
100'	103'		2150	2630	3063	3500	3960	4520	5040

For Weights Other Than 6" Centers, Add Or Deduct														
Roller Centers	15" B.F.		21" B.F.		27" B.F.		33" B.F.		39" B.F.		45" B.F.		51" B.F.	
	5'	10'	5'	10'	5'	10'	5'	10'	5'	10'	5'	10'	5'	10'
3"	+30	+60	+40	+80	+50	+100	+60	+120	+70	+140	+80	+160	+90	+180
4 1/2"	+15	+30	+20	+40	+25	+50	+30	+60	+35	+70	+40	+80	+45	+90
9"	-12	-13	-16	-24	-20	-30	-14	-36	-18	-42	-32	-48	-36	-54
12"	-15	-28	-20	-40	-25	-50	-30	-60	-35	-70	-40	-80	-45	-90

Load Capacity Chart @ 60 FPM

HP	Overall Frame Width 18" to 22" Total Load (lbs.)		Overall Frame Width 24" to 30" Total Load (lbs.)		Overall Frame Width 36" to 42" Total Load (lbs.)	
	Up to 53'	Up to 103'	Up to 53'	Up to 103'	Up to 53'	Up to 103'
1/2	2400	1700	2100	1100	1600	250
3/4	3600	3000	3400	2500	2900	1700
1	4600	4100	4300	3600	4000	2800
1 1/2	6500	6000	6200	5500	5900	4900
2	7800	7400	7600	7000	7300	6400



MODEL "190RBW"

Roller Bed Wire Mesh Belt Conveyor



- Drying operations
- Wet or oily products
- Hot or cold parts from ovens or freezers
- One direction operation

STANDARD SPECIFICATIONS

Belt Width - 12", 18", 24" and 36" wide, $\frac{1}{2}$ "x1" flat wire belt.

Bed - 1.9" diameter rollers mounted on 6" centers in $6\frac{1}{2}$ " deep x 12 gauge powder painted formed channel, bolted together with splice plates and supports.

Drive Sprockets - 6" pitch diameter cast iron sprockets machined for $1\frac{3}{16}$ " diameter shaft.

Tail Pulley - 4" diameter with 4" pitch diameter cast iron sprockets on each end of pulley, $1\frac{3}{16}$ " diameter shaft.

Snub Roller - Adjustable 2" diameter roller located directly behind drive sprockets and tail sprockets.

Return Idlers - 1.9" diameter, adjustable, on 10'0" centers.

Take-Up - 6" long screws located at tail pulley to tighten belt.

Bearings - Sealed and prelubricated with heavy duty housing.

Floor Supports - Adjustable 31" to 45" from floor to top of belt. One support supplied at each end of conveyor and at each bed joint.

Speed Reducer - C-Face mounted heavy duty worm gear reducer.

Motor - $\frac{1}{2}$ HP 230/460-3-60 TE motor.

Belt Speed - 60 FPM constant.

Capacity - Maximum load per linear foot of conveyor - 75 pounds. Not to exceed Load Capacity Chart.

OPTIONAL EQUIPMENT

Belt - $\frac{1}{2}$ " x $\frac{1}{2}$ " flat wire, galvanized, stainless steel. Others.

Guard Rails - Adjustable channel, continuous channel, or solid steel guard rails available.

Floor Supports - Lower or higher supports available.

Ceiling Hangers - $\frac{1}{2}$ " diameter threaded rods 8 feet long with locking nuts and mounting hardware. Other lengths are available.

Side Mounted Drive - End drive mounted to side of conveyor. Specify side. Minimum elevation - 10".

Overhead Drive - End drive mounted above conveyor. Specify clearance required.

Motor - Single phase, energy efficient, explosion proof, etc. Other HP available.

Belt Speed - Constant and variable belt speeds available.

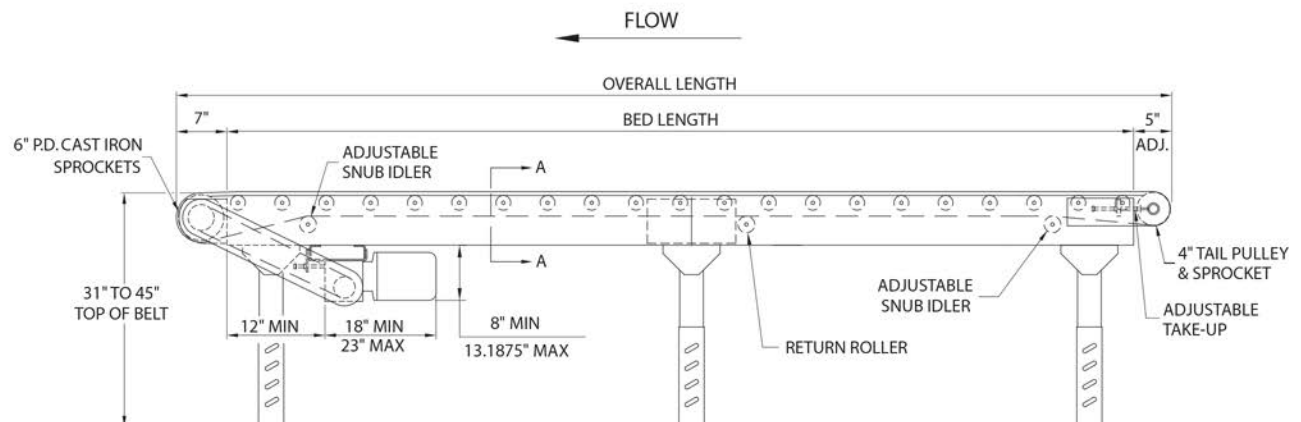
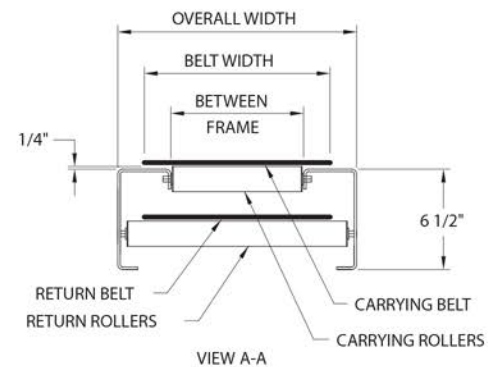
Electrical Controls - Magnetic starters and push button stations; manual motor starters with overload protection, others.

MODEL "190RBW"

Bed Length	Overall Length	Between Frames	8"	14"	20"	32"
		Belt Width	12"	18"	24"	36"
		Bed Width	16"	22"	28"	40"
5'	6'1"	Weight (lbs.)	299	320	365	431
10'	11'1"		368	413	465	562
15'	16'1"		461	523	593	725
20'	21'1"		530	605	693	856
25'	26'1"		623	715	821	1019
30'	31'1"		692	800	921	1150
35'	36'1"		773	943	1035	1297
40'	41'1"		854	990	1149	1444
45'	46'1"		939	1045	1270	1602
50'	51'1"		1023	1195	1391	1759
55'	56'1"		1104	1290	1500	1896
60'	61'1"		1185	1385	1609	2033
65'	66'1"		1270	1487	1736	2201
70'	71'1"		1355	1590	1862	2369
75'	76'1"		1436	1685	1976	2516
80'	81'1"		1517	1785	2090	2663
85'	86'1"		1598	1880	2205	2811
90'	91'1"		1679	1975	2319	2959
95'	96'1"		1760	2072	2433	3106
100'	101'1"		1841	2170	2547	3253

Load Capacity Chart

60 FPM	
HP	TOTAL LOAD
1/2	1300 lbs.
3/4	2000 lbs.
1	2500 lbs.





- Transportation
- Diverting
- Merging
- Low Pressure Accumulation

STANDARD SPECIFICATIONS

Belt Width - 12", 18", 24", 30", and 48" wide, 1" grey polypropylene thermoplastic modular belt.

Bed - 7" deep x 12 gauge powder painted formed steel channel frames set low with guard. Bolt-in formed steel pan with UHMW carrying surface.

End Drive - End drive standard.

X-Bracing - Frame squaring device supplied on conveyors 40 feet and longer for every other bed section. X-bracing insures good product and belt tracking.

Sprockets - 5.8" pitch diameter x 1.5" square bore, molded polyamide thermoplastic.

Return Idlers - UHMW rollers located along overall length for proper belt tension.

Take-up - Belt take-up is done with belt (catenary) sagging.

Bearings - Sealed and prelubricated with cast iron housings.

Floor Supports - Adjustable 30³/₄" to 44³/₄" from floor to top of belt. One support supplied at each end of conveyor and at each bed joint.

Speed Reducer - C-Face mounted heavy duty worm gear reducer.

Motor - ³/₄ HP 230/460-3-60 TE motor.

Belt Speed - 60 FPM constant.

Capacity - 200 pounds per foot maximum. Not to exceed Load Capacity Chart.

OPTIONAL EQUIPMENT

Belt - Various styles (colors & materials) available - contact factory.

Sprockets - Other pitch diameters available.

Guard Rails - Adjustable channel, continuous channel, or solid steel guard rails available.

Floor Supports - Lower or higher than standard. Castored supports with 4" diameter or 6" diameter rigid or swivel casters.

Ceiling Hangers - 1/2" diameter threaded rods 8 feet long with locking nuts and mounting hardware. Other lengths are available.

Side Mounted Drive - End drive mounted to side of conveyor section. Specify side. Minimum elevation - 10".

Motor - Single phase, energy efficient, explosion proof, etc. Other HP available.

Belt Speed - Constant and variable belt speeds available.

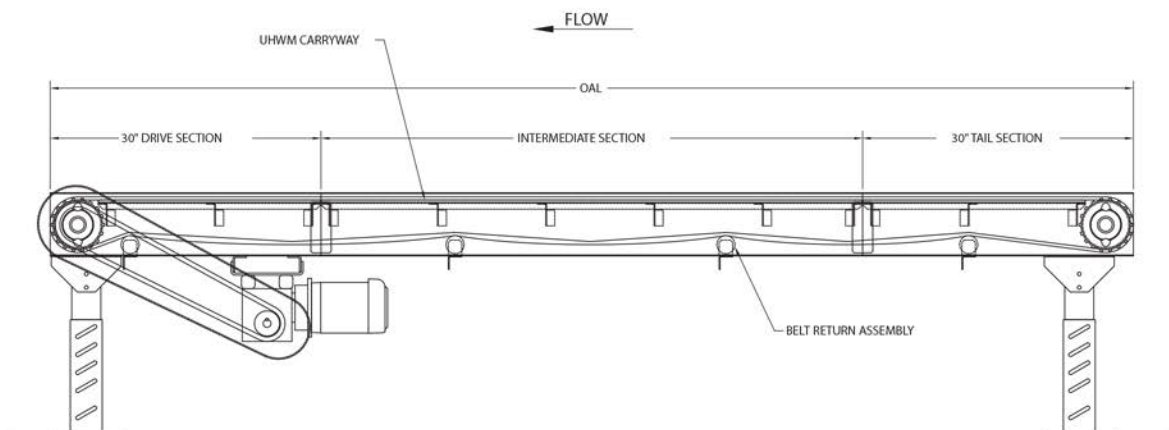
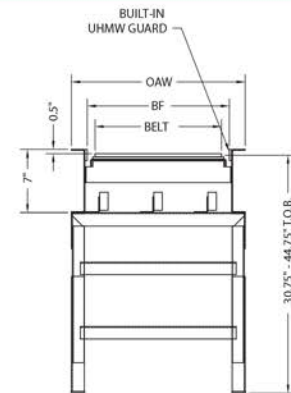
Electrical Controls - Magnetic starters and push button stations; manual motor starters with overload protection, others.

MODEL "MPB"

MODEL MPB - WEIGHTS					
Belt Width	12"	18"	24"	30"	48"
BF	15"	21"	27"	33"	51"
Overall Width	18"	24"	30"	36"	54"
10'0" OAL	299	341	384	429	458
Per Foot	21	26	30	35	40

Load Capacity Chart

60 FPM	
HP	TOTAL LOAD
$\frac{3}{4}$	675 lbs.
1	1025 lbs.
$1\frac{1}{2}$	1750 lbs.
2	2450 lbs.



MODEL "FTC"

Inclined Floor-to-Floor Conveyor

- **Booster conveyor for gravity flow systems**
- **Transporting between floors**
- **Center drive**



STANDARD SPECIFICATIONS

Belt - 14", 18", 24", 30" and 36" wide black PVC 120 rough-top belt.

Bed - 20", 24", 30", 36" and 42" wide 12 gauge powder painted formed steel slider bed. Bed is 6 1/2" deep x 6 feet, 8 feet or 10 feet long spliced together with splice plates.

Under-Trussed Bed - Extra reinforcement to prevent sag in longer bed sections in addition to reinforcing angles, 24 feet and longer.

Double Nose-Over - Two 16" long adjustable bed sections provide a two step transition from incline to horizontal with 15° to 35° adjustment.

Tail Pulley - 4" diameter, crowned with 1 3/16" diameter shaft through 30" wide belt. 6" diameter tail pulley with 1 7/16" diameter shaft for wider than 30" belt.

Drive Pulley - 8" diameter crowned and lagged. 1 7/16" diameter.

Snub Roller - 2 1/2" diameter at drive pulley and 2" diameter at tail pulley.

Return Idlers - 1.9" diameter, adjustable.

Take-Up - Located in center drive assembly, provides 24" of belt take-up.

Pop-Out Roller - Free floating, 1 3/8" diameter rollers located at tail pulleys with gravity connector rods. Will lift out if anything is caught between pulleys and rollers.

Floor Supports - Adjustable stands to give 30 3/4" to 44 3/4" height at each end; with knee braces.

Bearings - Sealed prelubricated with cast iron housings.

Speed Reducer - C-Face mounted heavy duty worm gear reducer.

Motor - 3/4 HP 230/460-3-60 TE motor.

Belt Speed - 60 FPM constant.

Capacity - 100 lbs. per foot maximum. Not to exceed Load Capacity Chart.

OPTIONAL EQUIPMENT

Belt - Neoprene ruff-top and other types and styles - contact factory.

Guard Rails - Adjustable channel, continuous channel, or solid steel guard rails available.

Ceiling Hangers - 1/2" diameter threaded rods of 8 feet long with locking nuts and mounting hardware. Other lengths are available.

Floor Stands - Lower or higher than standard.

Lower Powered Feeder Section - Separate belt section with (2) supports, adjustable from 28 1/2" to 42 1/2". Driven by roller chain from tail pulley of inclined section. Integral feeder available.

Single Nose-Over - A straight section 23 1/2" from tail pulley to center of nose-over roller provides for smooth transition from 0° to 15° incline.

Motor - Single phase, energy efficient, explosion proof, etc. Other HP available.

Belt Speed - Constant and variable belt speeds available.

Electrical Controls - Magnetic starters and push button stations; manual motor starters with overload protection, others.

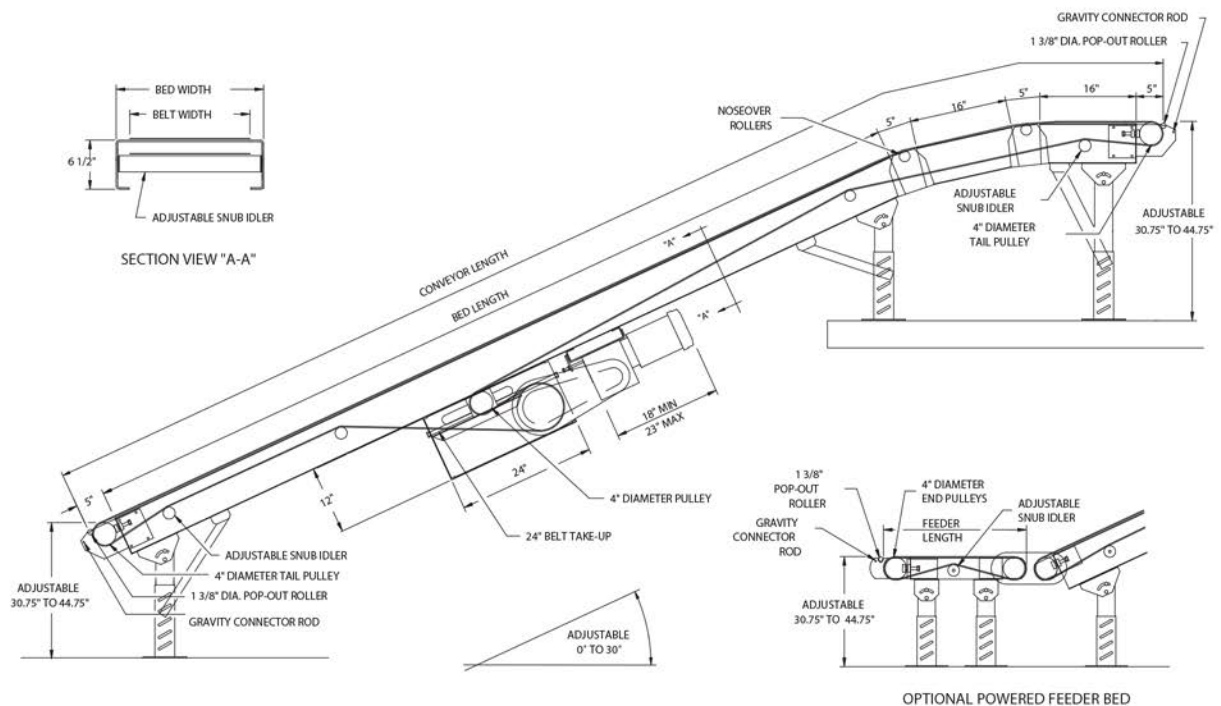
MODEL "FTC"

Overall Length	Bed Length	Net Lift 25°	Horizontal Floor Space @ 25°	Belt Width Bed Width	14"	18"	24"	30"
					20"	24"	30"	36"
14'4"	10'	4'8"	13'2"	Weight (lbs.)	650	720	825	925
18'4"	14'	6'4"	16'10"		730	815	935	1050
20'4"	16'	7'2"	18'7"		760	850	980	1100
22'4"	18'	8'0"	20'5"		800	895	1030	1165
24'4"	20'	8'10"	22'3"		825	930	1070	1210
26'4"	22'	9'8"	24'1"		970	1085	1240	1390
28'4"	24'	10'7"	25'10"		1005	1125	1295	1460
30'4"	26'	11'5"	27'8"		1040	1160	1330	1500
32'4"	28'	12'3"	29'6"		1070	1200	1380	1560
34'4"	30'	13'1"	31'4"		1110	1240	1430	1610
36'4"	32'	13'11"	33'1"		1190	1330	1530	1720
38'4"	34'	14'9"	34'11"		1220	1370	1580	1780
40'4"	36'	15'7"	36'9"		1250	1410	1620	1830
42'4"	38'	16'6"	38'7"		1290	1450	1670	1890
44'4"	40'	17'4"	40'4"		1320	1490	1715	1940

Load Capacity Chart

60 FPM	
HP	TOTAL LOAD
3/4	430 lbs.
1	540 lbs.
1 1/2	810 lbs.
2	1080 lbs.

POWER FEEDER - OPTIONAL



MODEL "190RBI"

Incline Roller Bed Conveyor

- Transporting between floors
- Booster conveyor for gravity flow systems
- Heavier loads can be conveyed because of less friction build-up



STANDARD SPECIFICATIONS

Belt - 12", 16", 18", 20", 24" and 30" wide black PVC 120 rough-top belt.

Bed - Roller bed with 1.9" diameter x 16 gauge galvanized rollers spaced on 6" centers. Rollers mounted in 7" x 1½" x 12 gauge powder painted formed steel channel frames. Frames bolted together with butt couplings.

Under-Trussed Bed - Extra reinforcement to prevent sag in longer bed sections in addition to reinforcing angles, 20 feet and longer.

X-Bracing - Supplied on conveyors 40 feet and longer. Used to square bed sections to insure proper product and belt tracking.

Double Nose-Over - Adjustable from 0° to 30°.

Center Drive - Mounted below conveyor bed section. Can be placed most anywhere in conveyor length.

Tail Pulley - 4" diameter, crowned with 1⅜" diameter shaft through 30" wide belt. 6" diameter tail pulley with 1⅞" diameter shaft for wider than 30" belt.

Drive Pulley - 8" diameter and fully lagged, 1⅞" diameter shaft.

Snub Roller - 2½" diameter at drive pulley, 2" diameter at terminal pulleys.

Return Roller - 1.9" diameter.

Take-Up - Located in center drive, provides 24" of belt take-up.

Gravity Brackets - Adjustable rod with 1⅜" diameter pop-out transfer roller to attach wheel or 1⅜" diameter roller conveyor.

Bearings - Sealed prelubricated with cast iron housings.

Floor Supports - Adjustable 31½" to 45½" from floor to top of belt. One support supplied at each end of conveyor and at nose-over, with knee braces.

Speed Reducer - C-Face mounted heavy duty worm gear reducer.

Motor - ¾ HP 230/460-3-60 TE motor.

Belt Speed - 60 FPM constant.

Capacity - See Load Capacity Chart.

OPTIONAL EQUIPMENT

Belt - Neoprene ruff-top and other types and styles - contact factory.

Guard Rails - Adjustable channel, continuous channel, or solid steel guard rails available.

Ceiling Hangers - ½" diameter threaded rods 8 feet long with locking nuts and mounting hardware. Other lengths are available.

Floor Supports - Lower or higher than standard.

Lower Powered Feeder Section - Separate belt section with (2) supports, adjustable from 28½" to 42½". Driven by roller chain from tail pulley of inclined section. Integral feeders available.

Motor - Single phase, energy efficient, explosion proof, etc. Other HP are available.

Belt Speed - Constant and variable belt speeds available.

Electrical Controls - Magnetic starters, push button stations; manual motor starters with overload protection, others.

Single Noseover - Available.

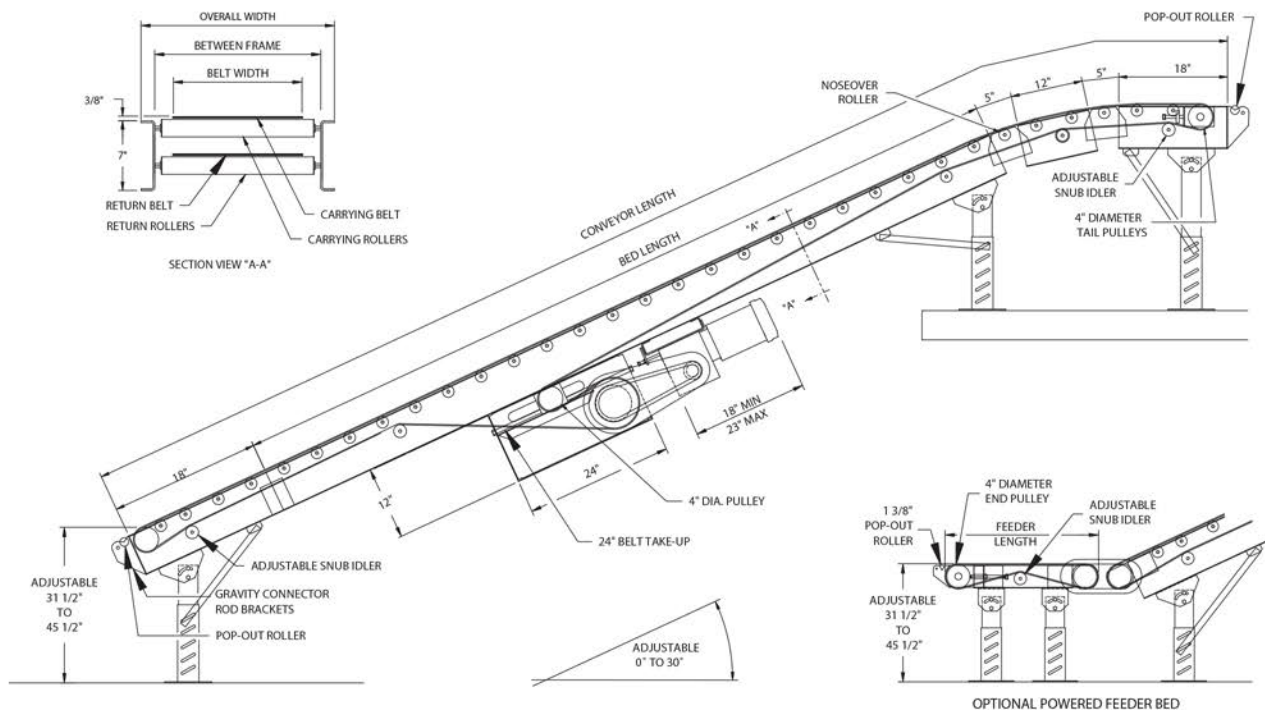
MODEL "190RBI"

Conveyor Length	Bed Length	Net Lift 25°	Horizontal Floor Space 25°	Weight (lbs.)	Between Frames	15"	19"	21"	23"	27"	33"
					Belt Width	12"	16"	18"	20"	24"	30"
					Overall Frame Width	18"	22"	24"	26"	30"	36"
14'10"	10'	4'8"	11'9"			900	1040	1120	1190	1330	1470
16'10"	12'	6'5"	15'5"			1050	1230	1305	1385	1570	1740
18'10"	14'	7'3"	17'3"			1130	1320	1410	1500	1695	1890
20'10"	16'	8'1"	19'0"			1200	1400	1510	1610	1810	2020
22'10"	18'	8'11"	20'10"			1280	1508	1615	1730	1950	2170
24'10"	20'	9'9"	22'8"			1450	1690	1800	1925	2160	2300
26'10"	22'	10'7"	24'6"			1530	1780	1910	2040	2300	2570
28'10"	24'	11'6"	26'4"			1600	1880	2010	2150	2420	2690
30'10"	26'	12'4"	28'1"			1680	1960	2112	2250	2540	2820
32'10"	28'	13'2"	29'11"			1760	2070	2220	2370	2680	2990
34'10"	30'	14'0"	31'9"			1860	2180	2340	2500	2820	3140
36'10"	32'	14'10"	33'7"			1940	2280	2450	2620	2960	3300
38'10"	34'	15'8"	35'4"			2020	2370	2550	2730	3080	3430
40'10"	36'	16'6"	37'2"			2090	2460	2650	2830	3200	3570
42'10"	38'	17'5"	39'0"			2180	2560	2760	2950	3340	3730

Load Capacity Chart

60 FPM - 25° Incline	
HP	50' OAL Max. Total Live Load
3/4	450 lbs.
1	675 lbs.
1 1/2	1125 lbs.
2	1345 lbs.

POWER FEEDER - OPTIONAL



MODEL "190RBW-S"

Medium Duty Belt Over Roller Conveyor

- Ideal for the Parcel Industry
- Transporting
- Packing
- Inspecting

Note:

Shown with optional non-standard paint color.



Shown with optional UHMW transition plate and end cover.

STANDARD SPECIFICATIONS:

Belt - 12", 18", 24", 36", and 42" wide, black PVC 120 belt.

Bed - 1.9" diameter x 16 ga. galvanized steel rollers with $\frac{7}{16}$ " hex axle mounted on 6" centers in 6 $\frac{1}{2}$ " deep x 12 gauge powder painted formed channel, bolted together with splice plates and supports. Bed formed so that the belt edges rest on the slider pan and completely cover the carrying rollers beneath.

Center Drive - Mounted below conveyor bed section.

Drive Pulley - 8" diameter and fully lagged, 1 $\frac{7}{16}$ " diameter shaft.

Tail Pulley - 6" diameter crowned.

Snub Roller - 2 $\frac{1}{2}$ " diameter at drive pulley and terminal pulleys.

Return Idlers - 1.9" diameter, adjustable, on 10'0" centers.

Take-Up - Located in center drive, provides 20" of belt take-up.

Pulley Bearings - Sealed, pre-lubricated with heavy duty cast iron housings.

Floor Supports - 31" to 45" adjustable from floor to top of belt. One support provided for each end of conveyor and at each bed joint. Other elevations are available.

Speed Reducer - C-Face mounted heavy duty worm gear reducer.

Motor - $\frac{1}{2}$ " HP 230/460-3-60 TE motor.

Belt Speed - 60 FPM constant.

Capacity - Maximum load per linear foot of conveyor - 150 pounds.

OPTIONAL EQUIPMENT:

End Drive - Underslung with chain guard on right or left hand side at discharge end.

Guard Rails - Adjustable channel, continuous channel, or solid steel guard rails available.

Side Mounted Drive - End drive mounted to side of conveyor section. Specify side. Minimum elevation - 10".

Belt Speeds - Constant and variable belt speeds available.

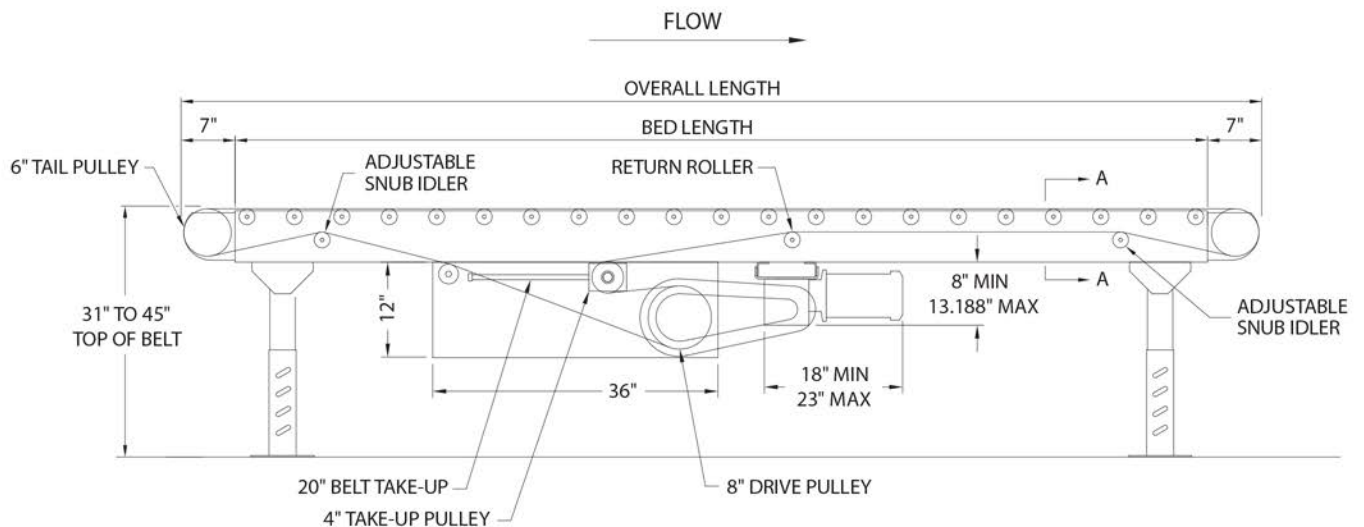
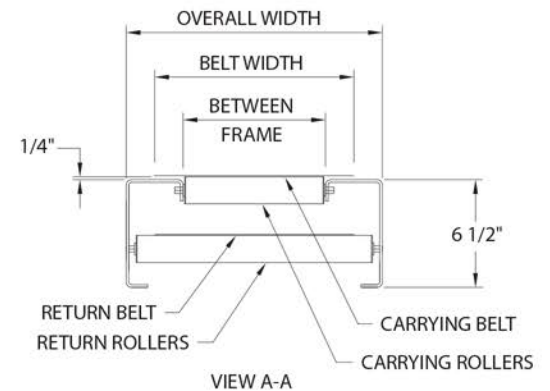
MODEL "190RBW-S"

MODEL 190RBW-S - WEIGHTS

Belt Width	12"	18"	24"	36"	42"
Overall Width	18"	24"	30"	42"	48"
10'0" OAL	741	1056	1444	2437	3042
Per Foot	10	13	17	23	26

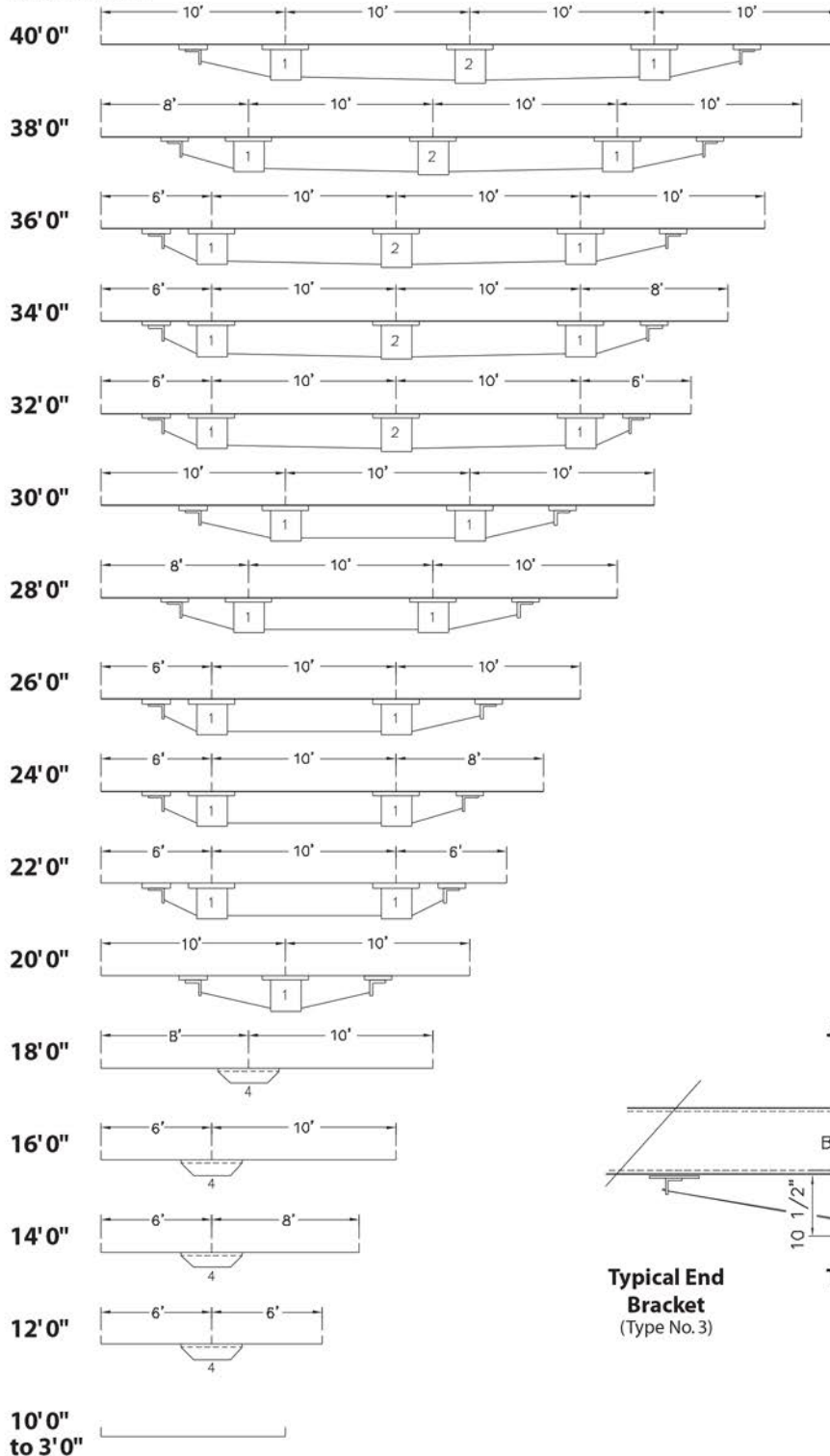
Load Capacity Chart

HP	Load Capacity (lbs) @ 60 FPM					
	Overall Frame Width					
	18" - 24"		30" - 36"		42" - 48"	
	50'	100'	50'	100'	50'	100'
1/2	2400	1700	2100	1100	1600	250
3/4	3600	3000	3400	2500	2900	1700
1	4600	4100	4300	3600	4000	2800
1 1/2	6500	6000	6200	5500	5900	4900
2	7800	7400	7600	7000	7300	6400



Bed & Undertrussing Chart

BED LENGTH



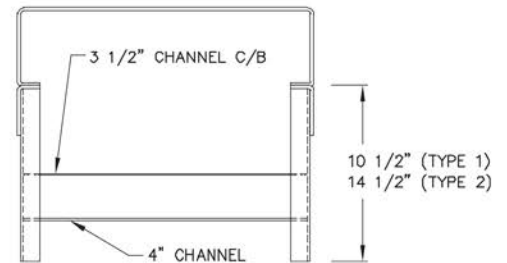
ROD SIZES

Type "A" - 50" long - $\frac{5}{8}$ " diameter

Type "B" - 62" long - $\frac{5}{8}$ " diameter

Type "C" - 119" long - $\frac{5}{8}$ " diameter

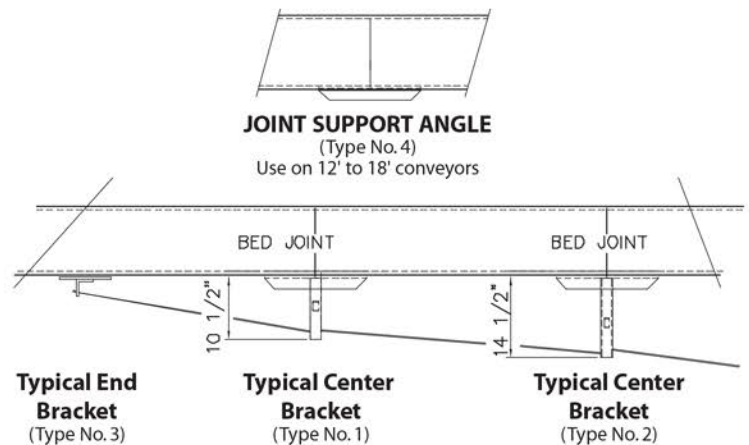
NOTE: For center drive use Type No.2 Center Bracket on both sides of drive.



JOINT SUPPORT ANGLE

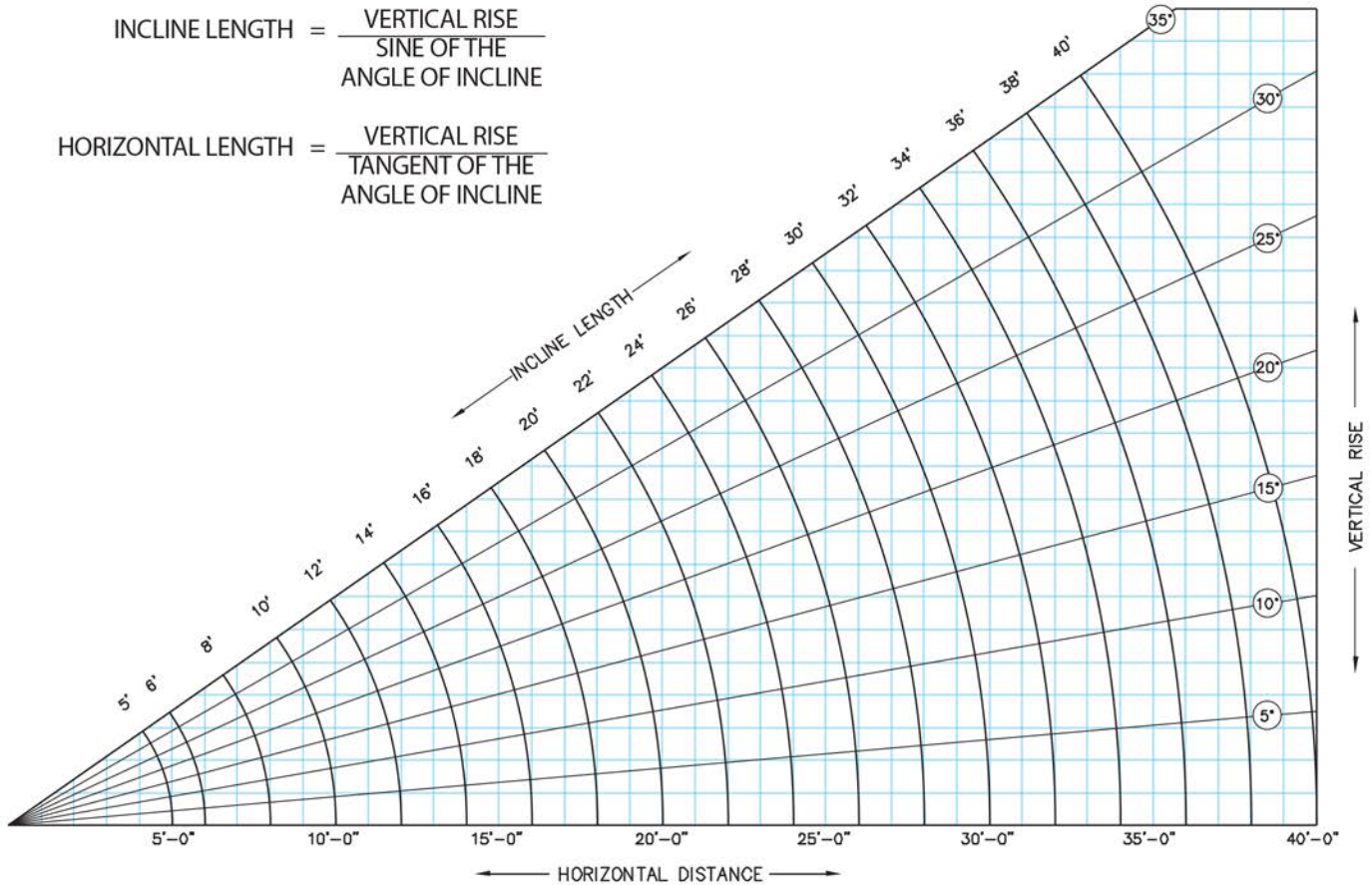
(Type No. 4)

Use on 12' to 18' conveyors



$$\text{INCLINE LENGTH} = \frac{\text{VERTICAL RISE}}{\text{SINE OF THE ANGLE OF INCLINE}}$$

$$\text{HORIZONTAL LENGTH} = \frac{\text{VERTICAL RISE}}{\text{TANGENT OF THE ANGLE OF INCLINE}}$$



Angle	Sine	Tangent	Angle	Sine	Tangent	Angle	Sine	Tangent
1°	.02	.02	11°	.19	.20	21°	.36	.38
2°	.03	.03	12°	.21	.21	22°	.37	.40
3°	.05	.05	13°	.23	.23	23°	.39	.42
4°	.07	.07	14°	.24	.25	24°	.41	.45
5°	.09	.09	15°	.26	.27	25°	.42	.47
6°	.10	.11	16°	.28	.29	26°	.44	.49
7°	.12	.12	17°	.29	.31	27°	.45	.51
8°	.14	.14	18°	.31	.32	28°	.47	.53
9°	.16	.16	19°	.33	.34	29°	.48	.55
10°	.17	.17	20°	.34	.36	30°	.50	.58

Horsepower Calculation



BELT PULL AND HORSEPOWER CALCULATIONS

I. LIVE LOAD ON THE CONVEYOR:

- A. Horizontal Conveyor: Summation of total load being conveyed.
- B. Incline Conveyor: Live load on incline portion multiplied by the sine of the angle of incline. (See "Net Lift Chart").

II. BELT OR CHAIN WEIGHT:

- A. Belt Driven Conveyor: Belt weight from chart below multiplied by the width of the belt multiplied by the length of the conveyor for the weight of both the carrying belt and the return belt.

Type of Belt	Weight per Lineal Foot of Conveyor per Inch of Belt Width
3 Ply FS x FS	.1 Pound
3 Ply Ruff Top	.25 Pounds
3 Ply Neoprene	.125 Pounds

- B. Chain Driven Conveyor: Chain weight from chart below multiplied by conveyor length.

Conveyor Model	Chain Type	Weight per Lineal Foot of Conveyor
22CRR	#50	1.38 Pounds
251-267CRR	#50	3.0 Pounds
251-267CRR	#60	3.52 Pounds
Slat Conveyor	SR196	26.4 Pounds

- III. A. **Roller Weight:** See Chart below
- B. **Slat Weight:** 1.95 pounds per lineal foot of conveyor per inch of slat width.

IV. ADDITIONAL FACTORS:

- A. Feeder Beds: 10% of the live load on the feeder bed.
- B. Stopped product on running conveyor (case stop, traffic controller, etc.): 10% of the stopped product.
- C. Deflectors and Plows: 33% of the heaviest unit load.

V. COEFFICIENT OF FRICTION:

Slider Bed	.30
Belt on Roller	.05
Belt Driven Live Roller	.10
Chain Driven Live Roller	.075
Slat Conveyor	.15

Belt Pull Calculation: Summation of items I thru IV multiplied by item V.

$$\text{Belt Pull} = [(1A + II + III + IV) \times V] + 1B$$

VI. EFFECTIVE BELT PULL:

Belt pull from item V multiplied by 1.25 equals effective belt pull.

VII. DRIVE TRAIN EFFICIENCY FACTORS:

- A. Gear Reduction: 100 minus one half of the ratio of each step of reduction.

Example: Single Reduction 30: 1 Reduction
 $100 - 30/2 = 85\%$ efficient.

Double Reduction 800: 1 Reduction
 $100 - 40/2 - 20/2 = 70\%$ efficient.

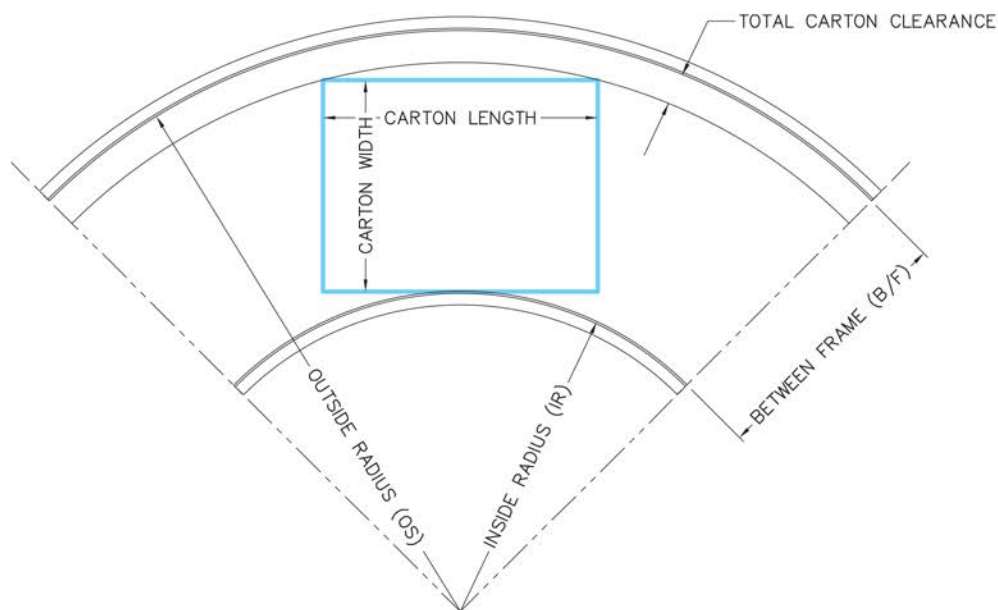
- B. Chain Reduction: 95% efficient.

Horsepower Calculation: Effective belt pull times speed in feet per minute divided by 33,000 divided by the gear reduction efficiency factor divided by the chain reduction efficiency factor.

$$\text{Horsepower} = \frac{\text{Effective Belt Pull} \times \text{Speed in F.P.M.}}{33,000 \times (\text{VII.A}) \times .95}$$

ROLLER WEIGHT CHART

ROLLER DESCRIPTION			WEIGHT PER BETWEEN FRAME DIMENSION								
Cat.No.	Diameter	Gage	11"	15"	19"	21"	23"	27"	31"	33"	39"
190SR	1.9	16	2.2	2.7	3.3	3.6	3.8	4.4	4.9	5.2	6.1
20SR	2.0	12	3.4	4.5	5.6	6.1	6.6	7.7	8.8	9.4	11.0
199SR	1.9	9	3.4	4.5	5.6	6.1	6.6	7.7	8.8	9.4	11.0
254SR	2.5	14	3.0	3.9	4.8	5.3	5.7	6.6	7.5	8.0	9.3
251SR	2.5	11	5.6	7.1	8.5	8.9	9.3	11.5	12.9	13.6	15.7
267SR	2.63	7	6.7	8.7	10.8	11.8	12.8	14.9	16.9	17.9	21.0
350SR	3.5	.30"	14.9	19.6	24.3	26.7	29.0	33.7	38.4	40.8	47.8



CURVE SIZING FORMULA AND CHART

Use of the Pythagorean Theorem to determine the between frame (BF) dimension of curved conveyor sections relative to carton size:

$$BF = \sqrt{\left[\frac{\text{carton length}}{2}\right]^2 + [\text{carton width} + \text{inside radius}]^2} + \text{carton clearance} - \text{inside radius}$$

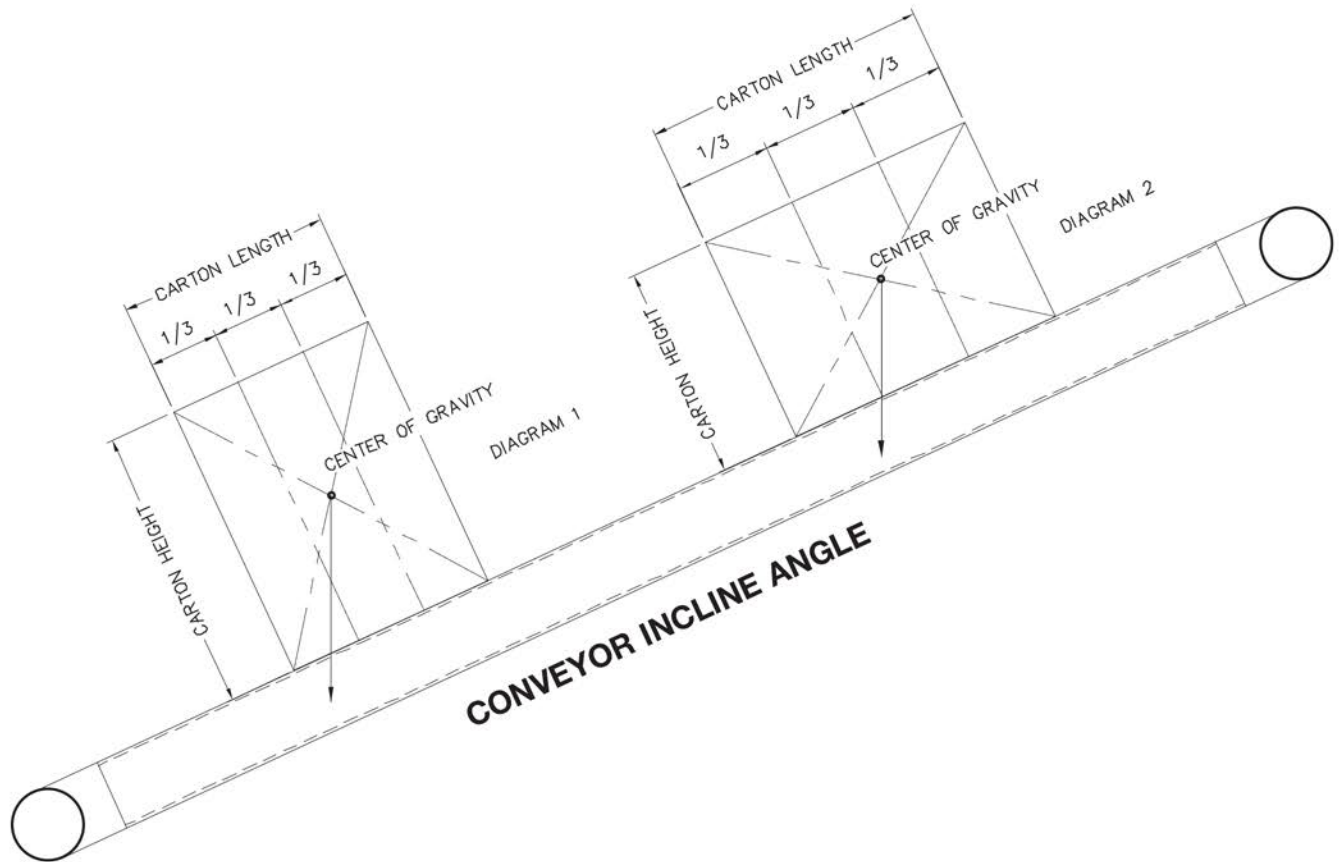
BF REQUIRED FOR CURVES HAVING 2' 8 1/2" RADIUS & SMALLER

Package Length	Package Width											
	4"	8"	12"	16"	20"	24"	28"	32"	36"	40"	44"	48"
4"	6	10	14	18	22	26	30	34	38	42	46	50
8"	6	10	14	18	22	26	30	34	38	42	46	50
12"	6	10	14	18	22	26	30	34	38	42	46	50
16"	7	11	15	19	22	26	30	34	38	42	46	50
20"	8	12	15	19	23	27	31	35	38	42	46	50
24"	9	12	16	20	23	27	31	35	39	43	47	51
28"	10	13	17	20	24	28	32	36	39	43	47	51
32"	11	14	18	21	25	29	32	36	40	44	48	51

BF REQUIRED FOR CURVES HAVING 3' 7 9/16" RADIUS & LARGER

Package Length	Package Width											
	4"	8"	12"	16"	20"	24"	28"	32"	36"	40"	44"	48"
4"	6	10	14	18	22	26	30	34	38	42	46	50
8"	6	10	14	18	22	26	30	34	38	42	46	50
12"	6	10	14	18	22	26	30	34	38	42	46	50
16"	6	10	14	18	22	26	30	34	38	42	46	50
20"	7	10	14	18	22	26	30	34	38	42	46	50
24"	7	11	15	19	23	27	31	34	38	42	46	50
28"	8	11	15	19	23	27	31	35	39	43	47	51
32"	8	12	16	20	24	27	31	35	39	43	47	51
36"	9	13	16	20	24	28	32	36	40	43	47	51
40"	10	13	17	21	25	28	32	36	40	44	48	52
44"	10	14	18	22	25	29	33	37	41	44	48	52
48"	11	15	19	22	26	30	33	37	41	45	49	53
52"	12	16	19	23	27	30	34	38	42	46	49	53
56"	13	17	20	24	27	31	35	39	42	46	50	54
60"	14	18	21	25	28	32	36	39	43	47	51	54
64"	15	19	22	26	29	33	36	40	44	47	51	55

Box Tumbling Diagram



DETERMINING FACTORS ON BOX TUMBLING:

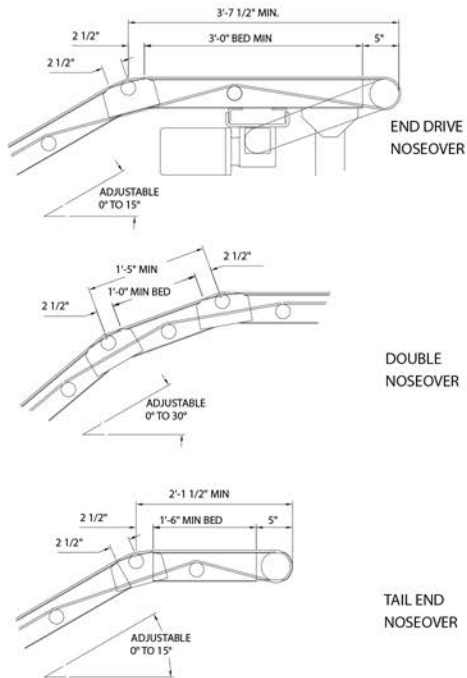
1. Draw conveyor angle of incline.
2. Draw box size on conveyor.
3. Draw diagonal lines to find center of box.
4. Divide lower portion of box into thirds.
5. Draw vertical line as shown
6. If vertical line falls within the lower third (See Diagram #1) the box may tumble depending on weight distribution.
7. If vertical line falls within the upper two thirds (See Diagram #2) the box will not tumble.

General guideline rate of fall chart for flow on gravity roller conveyor. Exact rate of fall should be determined at time of installation with actual product to be conveyed.

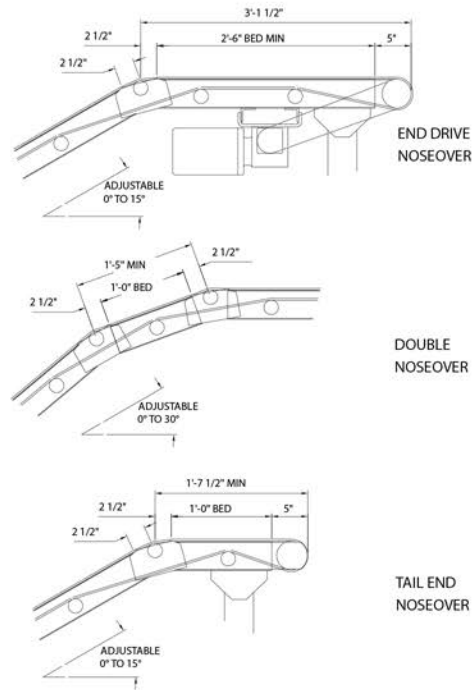
GRAVITY ROLLER RATE OF FALL CHART

Product with Conveyable Underside Surface	Weight Range in Pounds	Fall in 10'0"
Cartons	1 to 5	8" to 9"
Cartons	5 to 15	7" to 8"
Cartons	15 to 50	6" to 7"
Cartons	50 to 75	5" to 6"
Wood Boxes	20 to 50	5" to 6"
Wood Boxes	50 to 150	4" to 5"
Wood Boxes	150 to 200	3" to 4"
Steel Tote Bins	15 to 50	3" to 4"

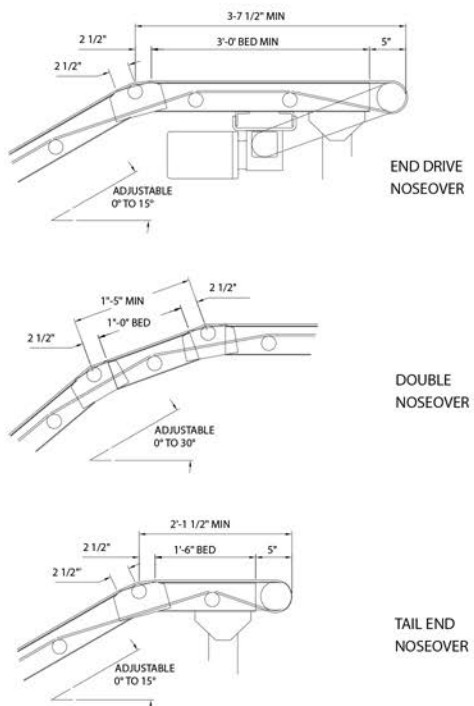
190RB NOSEOVER



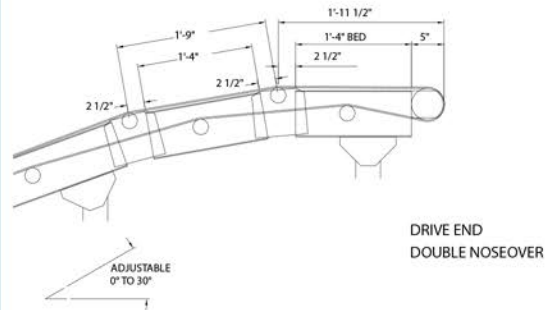
LPB NOSEOVER



TSB NOSEOVER



FTC & HPB NOSEOVER



Application Data Sheet



OPERATIONAL DATA

PO# _____

Environment:

- ☐ Normal ☐ Dirty/Dusty
☐ Washdown ☐ Oily
☐ Clean Room Class
☐ Other

Hours of Operation:

Hrs./Day _____ Days/Week _____

Average Rate: per Minute: _____

per Hour: _____

Maximum Rate: per Minute: _____

per Hour: _____

Conveyor Speed: _____ FPM

- ☐ Constant ☐ Variable speed
☐ Reversing

Total live load on conveyor: lbs.: _____
or lbs./ft: _____

Electric Motor Voltage & Enclosure:

Volts/Ph/Cycles: _____
☐ TEFC ☐ Washdown ☐ DC
☐ Inverter Duty ☐ EX.PR.

Control Operating Voltage:
☐ AC ☐ DC Volts: _____

Control Class of Service: ☐ Gen Purpose NEMA1
☐ Other: _____

Special Brand Equipment:

(Customer Specification - No Substitutes)

- ☐ Motors _____ Describe _____
☐ Reducers _____
☐ Solenoids _____
☐ Bearings _____
☐ Belt _____
☐ Paint _____
☐ Other _____

Plant Air Available ☐ No ☐ Yes _____ PSI

Date: _____

Distributor: _____

Salesman: _____

Phone: _____

PRODUCT INFORMATION

Product to be Conveyed: ☐ Box ☐ Pallet ☐ Drum
☐ Wire Basket
☐ Other

Product Size: Min Max Avg
Length: _____
Width: _____
Height: _____
Weight: _____

Description of Product:

Product Bottom: ☐ Smooth ☐ Hard ☐ Firm
☐ Soft ☐ Flat ☐ Solid ☐ Picture frame
☐ Slats ☐ Wood ☐ Corrugated ☐ Metal
☐ Plastic
☐ Other:

Product Sides: ☐ Vertical ☐ Tapered
☐ Lip at top (Protrusions) (Supply sketch)

Product Orientation In Direction of Travel:
☐ Length ☐ Width

ENGINEERING INFORMATION

Are layout drawings available? ☐ Yes ☐ No
Are they being provided? ☐ Yes ☐ No
Are **Approval Drawings** required? ☐ Yes ☐ No
Is product testing required? ☐ Yes ☐ No
If so, is customer supplying test product? ☐ Yes ☐ No

Testing Requirements: _____

Special Notes: _____

To avoid delays and changes when processing your order, this order form should be filled out completely.

Distributor Name: _____ Ship to: _____
 P.O. Number: _____
 Conveyor Mark: _____ Routing: _____
 Quote #: _____
 Today's Date: _____ Collect ☐ Prepaid ☐ UPS ☐ Third Party ☐

Qty.	Model	Length (OAL)	BF	C/S	OAW	Roller Ctrs.	Belt Width/Type	Speed FPM	Base Price
Motor _____ HP _____ / _____ / _____ TE _____ INV. DUTY _____ EXPR _____									
Elevation: Infeed _____ Discharge _____ Casters _____ Knee Braces _____									
Drive Type: <input type="checkbox"/> Center <input type="checkbox"/> End <input type="checkbox"/> Overhead <input type="checkbox"/> Side Mount <input type="checkbox"/> Floor Mount <input type="checkbox"/> Timing Belt Drive <input type="checkbox"/> Chain Drive									
<div style="display: flex; justify-content: space-between;"> <div> Drive Pulley: <input type="checkbox"/> 4" Diameter <input type="checkbox"/> 6" Diameter <input type="checkbox"/> 8" Diameter <input type="checkbox"/> 12" Diameter </div> <div> Tail Pulley: <input type="checkbox"/> 4" Diameter <input type="checkbox"/> 6" Diameter <input type="checkbox"/> 8" Diameter </div> </div>									
<div style="display: flex; justify-content: space-between;"> <div> Drive Shaft: <input type="checkbox"/> 1 3/16" Diameter <input type="checkbox"/> 1 7/16" Diameter <input type="checkbox"/> 1 15/16" Diameter </div> <div> Tail Shaft: <input type="checkbox"/> 1 3/16" Diameter <input type="checkbox"/> 1 7/16" Diameter <input type="checkbox"/> 1 15/16" Diameter </div> </div>									
Guard Rails: <input type="checkbox"/> Adj. Channel <input type="checkbox"/> One Side <input type="checkbox"/> For Bed Length Only <input type="checkbox"/> Solid Type <input type="checkbox"/> Both Sides <input type="checkbox"/> To Extend Over Pulleys <input type="checkbox"/> Channel Type <input type="checkbox"/> Angle Height of Non-Adj. Guard Rail: _____									
Feeder: <input type="checkbox"/> Integral <input type="checkbox"/> Chain Feeder Length _____ Elevations _____									
<input type="checkbox"/> Double Noseover <input type="checkbox"/> Single Noseover <input type="checkbox"/> Located as standard Other Location: _____									
<div style="display: flex; justify-content: space-between;"> <div> Motor Starters: <input type="checkbox"/> Manual (Start/Stop Only) <input type="checkbox"/> Mounted/Wired <input type="checkbox"/> One Direction (Magnetic) <input type="checkbox"/> Not Mounted/Wired <input type="checkbox"/> Reversing (Magnetic) Motor Voltage: _____ Control Operating Voltage: _____ </div> <div> Push Buttons: (For Magnetic Starters) <input type="checkbox"/> Start/Stop <input type="checkbox"/> Up/Down/Stop <input type="checkbox"/> For/Rev/Stop </div> </div>									
Paint (standard powder coat colors): <input type="checkbox"/> Green <input type="checkbox"/> Gray <input type="checkbox"/> White <input type="checkbox"/> Dark Blue <input type="checkbox"/> Tan <input type="checkbox"/> Black Special Paint: _____									

Warranty



Aegis Warranty

Aegis Sortation, warrants its products to be free of defects in materials and workmanship for a period of one year from the date of shipment or 2080 operating hours, whichever occurs first.

Aegis, will repair or replace, at Aegis's option, F.O.B. West Memphis, AR, any part providing defective according to the terms of this warranty. Aegis must be notified in writing of the claimed defect, including a description of the part, a description of the defect and date defect was discovered. Aegis reserves the right to inspect said defect at purchaser's installation site or to have said defective part or parts returned to Aegis via commercial freight carrier for inspection. Installation expense and any other expense associated with the removal of claimed defective part shall be borne by purchaser and Aegis's liability is extended only to furnishing said part or parts.

Aegis is not liable for incidental or consequential damages, such as loss of profit, delays or expenses incurred by failure of said part or parts or for failure of equipment to comply with any federal, state, or local laws.

Failure due to abuse, negligence, accident, improper repair, improper maintenance, incorrect adjustments, exposure to a corrosive or abrasive environment, operation under any degree of moisture or alteration/modification to the equipment without Aegis's written authorization, does not constitute failure due to defects in workmanship or materials.

Component parts not manufactured by Aegis (i.e.: motors, gears, reducers, etc) will be repaired or replaced at the option of the manufacturer. Contact the nearest authorized service center for those warranty claims. the warranty as specifically set forth here-in shall be purchaser's exclusive warranty and is hereby provided by Aegis in lieu of any and all other warranties, actual or implied.

NOTE: ANY COMPONENT PART (OR PARTS) NOT MANUFACTURED BY AEGIS THAT HAS (HAVE) BEEN TAMPERED WITH PRIOR TO INSPECTION BY THE MANUFACTURER'S AUTHORIZED REPRESENTATIVE, SHALL BE DEEMED FREE OF ALL WARRANTY CLAIMS.

**AEGIS SORTATION
LOUISVILLE, KENTUCKY**